

Previous Knowledge

- Understanding of primary and secondary colours.
- Thick brushes can add washes and thin brushes can be used for detail.
- Cleaning brushes between colours.

Henri Rousseau Tiger in a Tropical Storm



Learning point 1: Artist research

I can find out about a famous artist.

- Look closely at some of the works of Henri Rousseau.
- Discuss his life and what inspired him to start painting.
- Discuss how his paintings make you feel.
- Record some of this information in a sketchbook.

What are some of Rousseau's best-known works.

Learning point 2: Complimentary colours

I can identify complimentary colours.

- Use the colour wheel and identify the primary and secondary colours.
- Identify opposite colours as complimentary colours.
- Discuss a primary colour, then mix the remaining two to make the complimentary colour.

Look at 'A Centennial of Independence' and mix complimentary colours to recreate characters using poster paint.

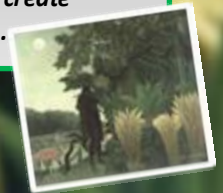


Learning point 3: Washes, shading and shadows

I can use washes to enhance my painting.

- Use thick brushes to make washes for a painting of a simple landscape scene.
- Add some detail with watercolour, then add a darker wash to add shadows and shading.
- Use lighter colours on top to add detail using a thin brush.

Look at 'The Snake charmer' and create washes for shading and shadows.

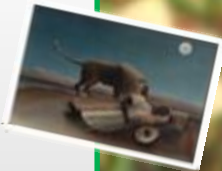


Final Piece: Create a scene, inspired by The Great Kapok Tree and 'Tiger in a Tropical Storm.'

I can create a painting in the style of Henri Rousseau.

- Revise discussion of 'Tiger in a Tropical Storm' colours used, details, atmosphere, etc.
- Identify the subject (animal) and the setting (jungle) and discuss what similar creatures we find in the text the Great Kapok Tree.
- Sketch a scene, using photographs, the text and Rousseau as inspiration.
- Paint the scene using washes, details.
- Use collage layers, like The Sleeping Gypsy, for the more able.

Critique your work. How is it similar/different to Rousseau's? Do you like this style? Why?



Learning point 4: dots, dabs and dashes

I can create detail using fine brushes.

- Look at Tiger in a Tropical Storm and other similar works. Discuss it. What details can you see? Highlight to rain, the ferns, the lines on the leaves, etc.
- Practice adding detail by using dots, dashes and dabs to washes using a fine brush.
- Identify where each technique can be used in a painting and decide the techniques that the children like best to use in a final piece.

Add detail to washes of watercolour, using watercolour or poster paint, to create foliage and rain effects.

Vocabulary

Complimentary Colours: colours opposite each other on the colour wheel

Washes: large areas of colour.

Watercolour: a water-based paint.

Collage: 2D layers built upon in different media.

Justify: prove your reasoning.